

*ENERGY DEVELOPMENTS IN SE EUROPE : RIDING THE GLOBAL TRENDS*

ESCP Europe Business School

November 28, 2017

# The Oil and Gas Upstream Potential in Greece

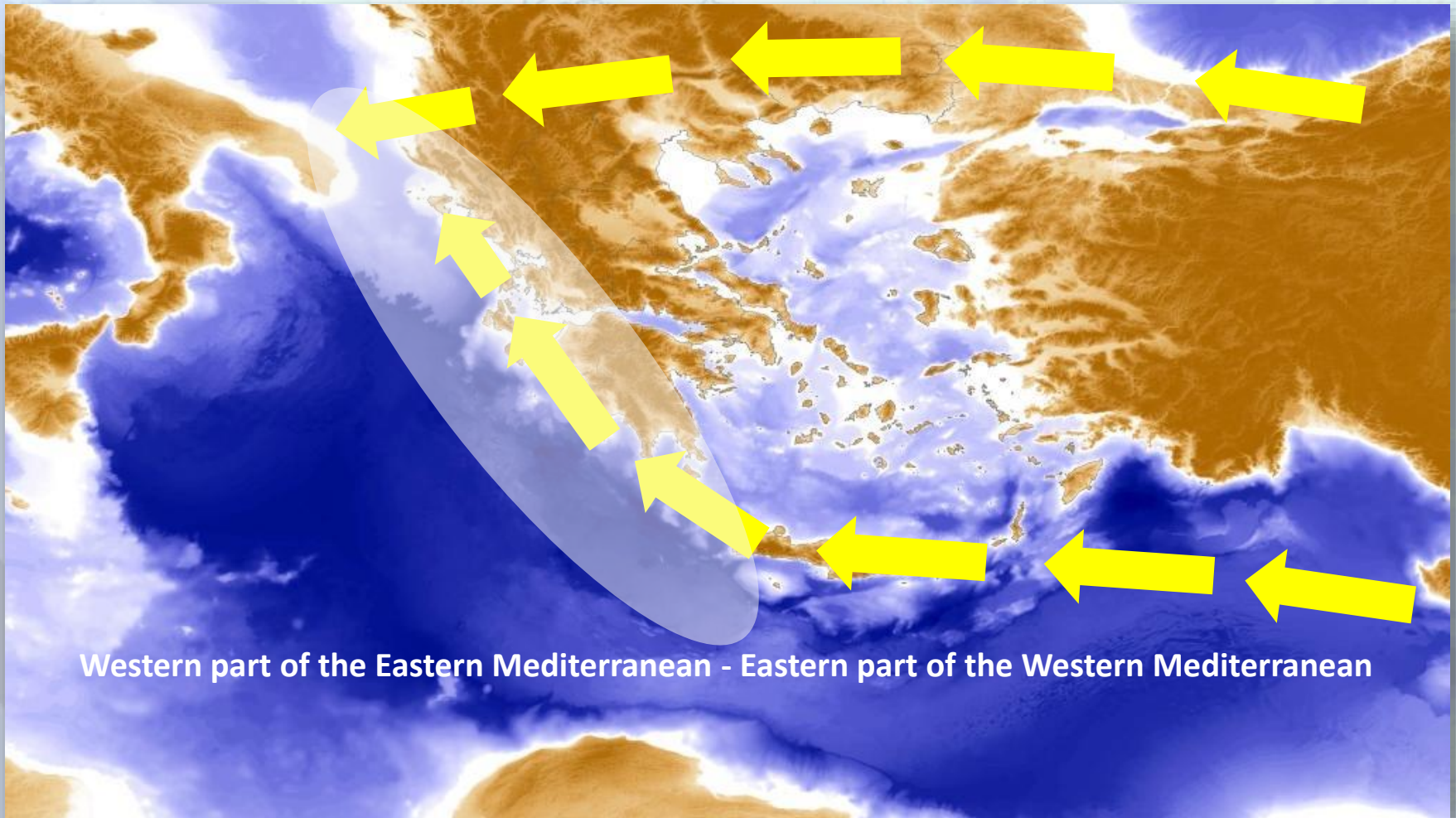
Hellenic Hydrocarbon Resources Management SA

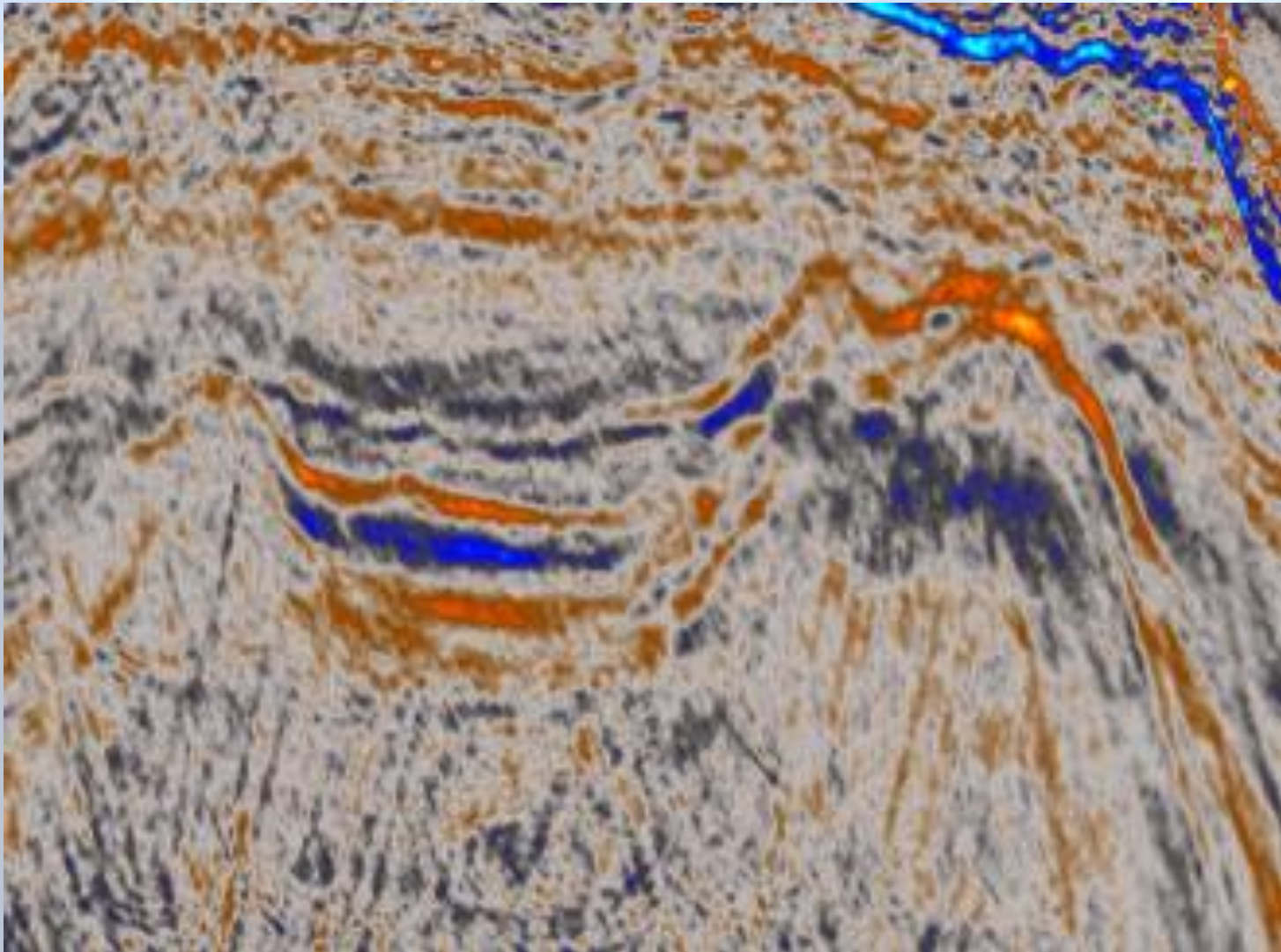


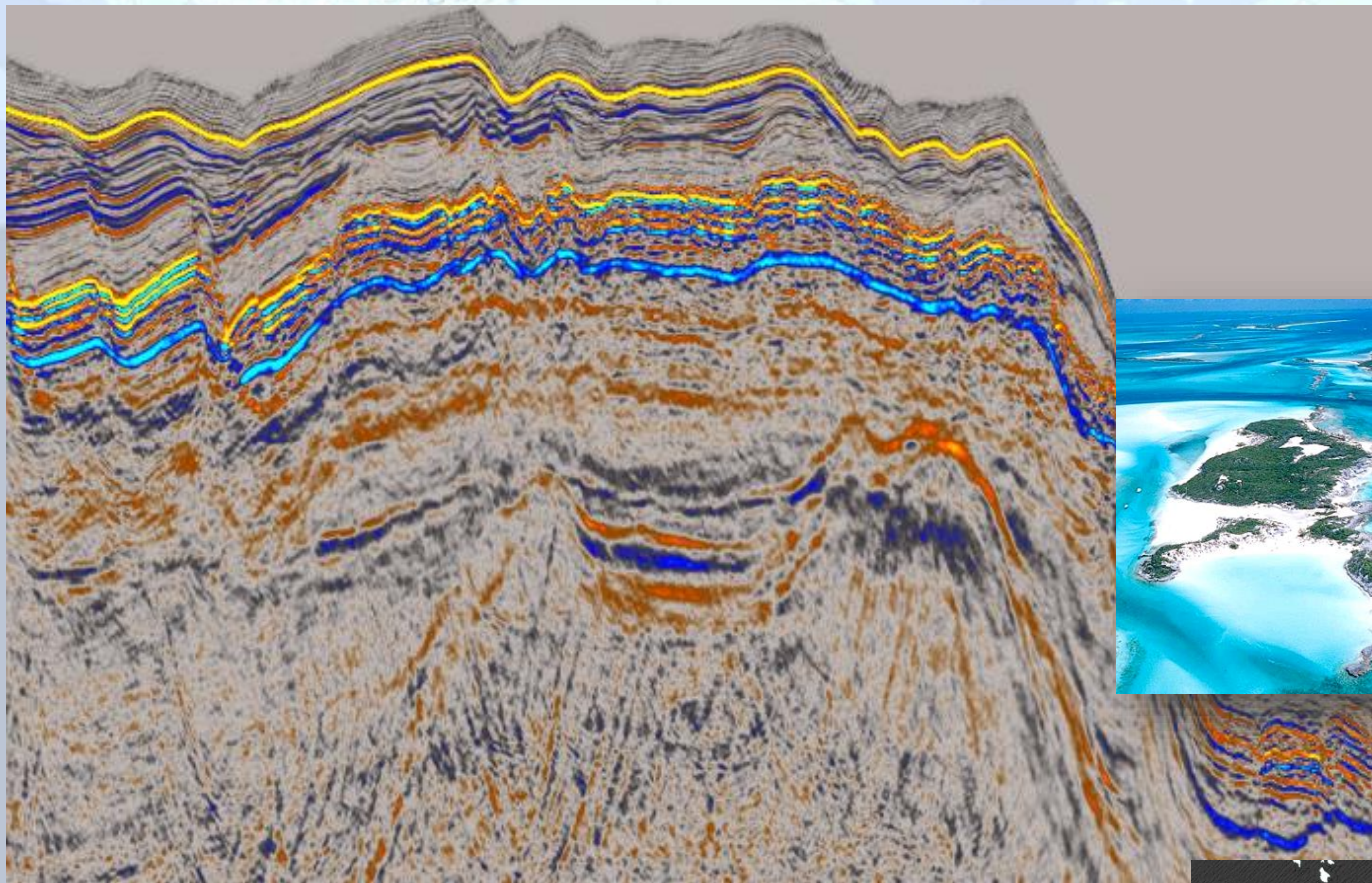
Yannis Bassias  
President and CEO of HHRM

*28 November 2017*

[www.greekhydrocarbons.gr](http://www.greekhydrocarbons.gr)





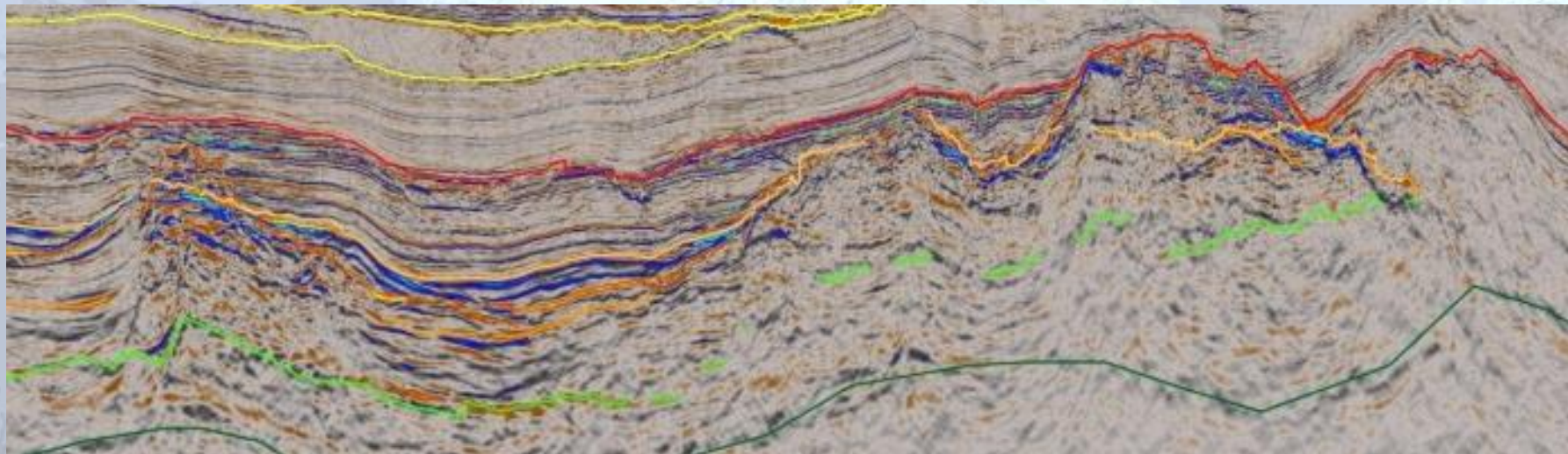


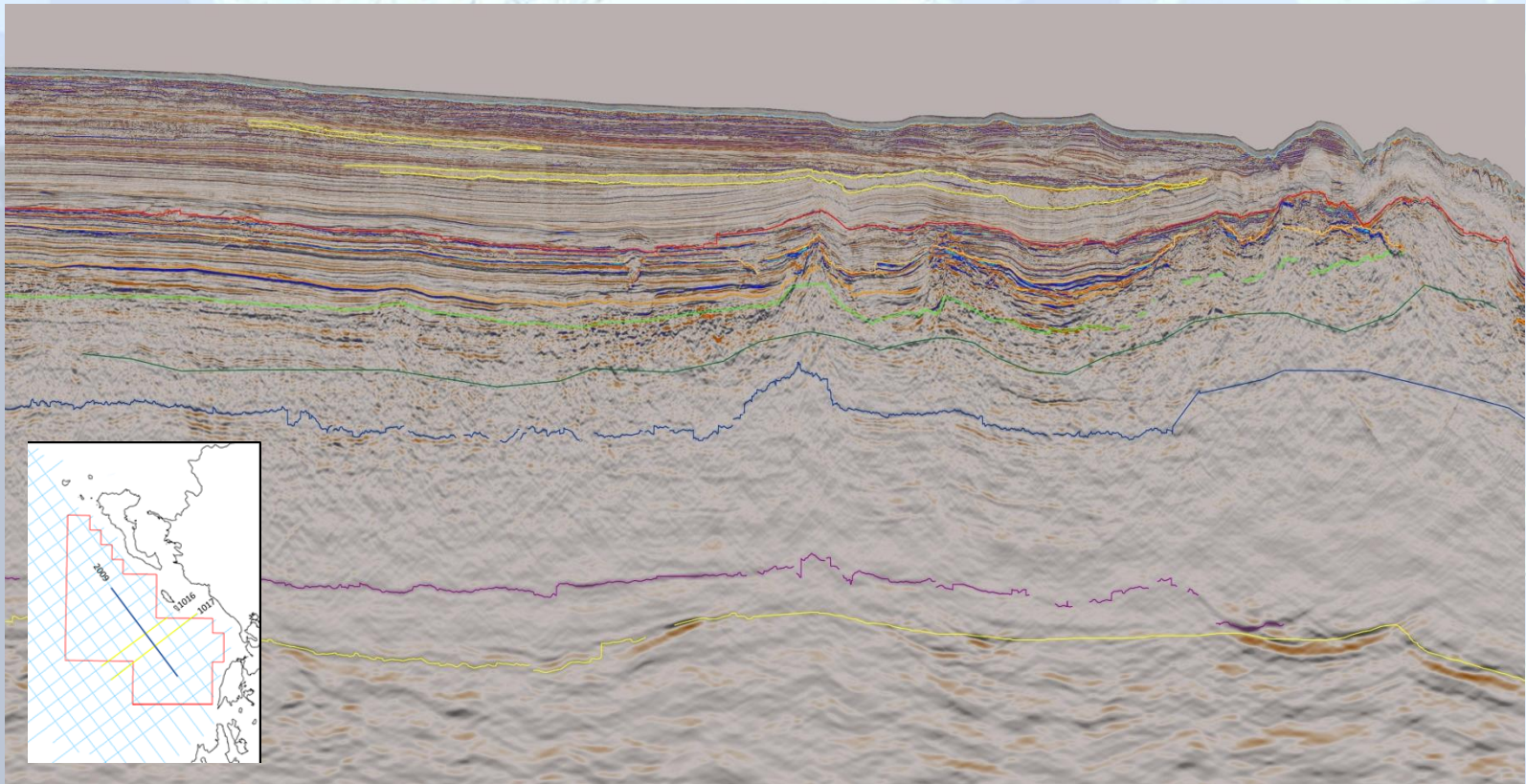
WD at structure: 430 m

TWT of structure: 950 msec

Structure width: ca. 7 km

Reefal carbonates “atoll type”, sealed by onlapping lagoonal seds.  
and Messinian Evaporites





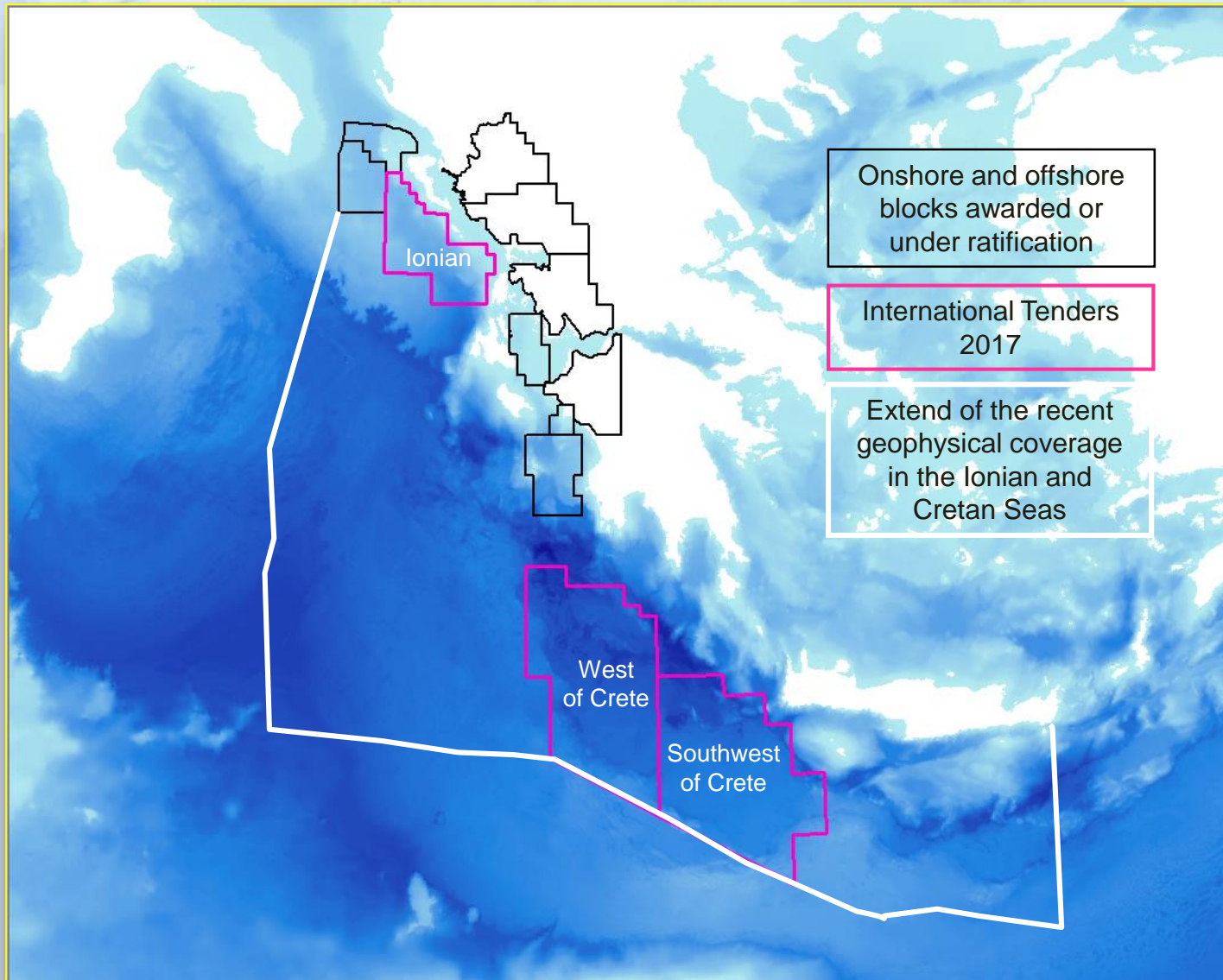
WD at structure: 1,590 m

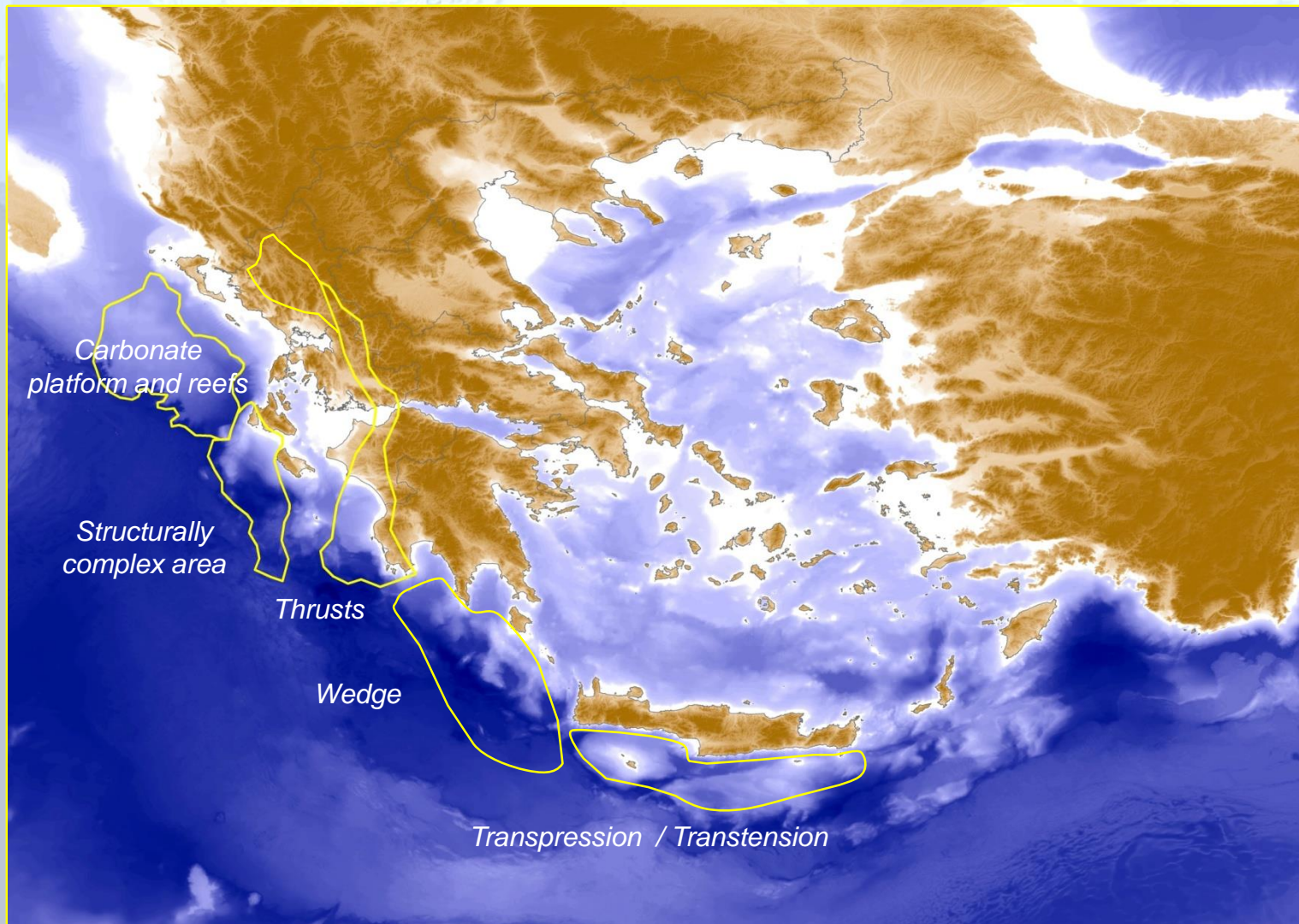
TWT of structure top: 2,9 sec

Isolated carbonate build up sealed by Neogene pelagic seds. and Evaporites

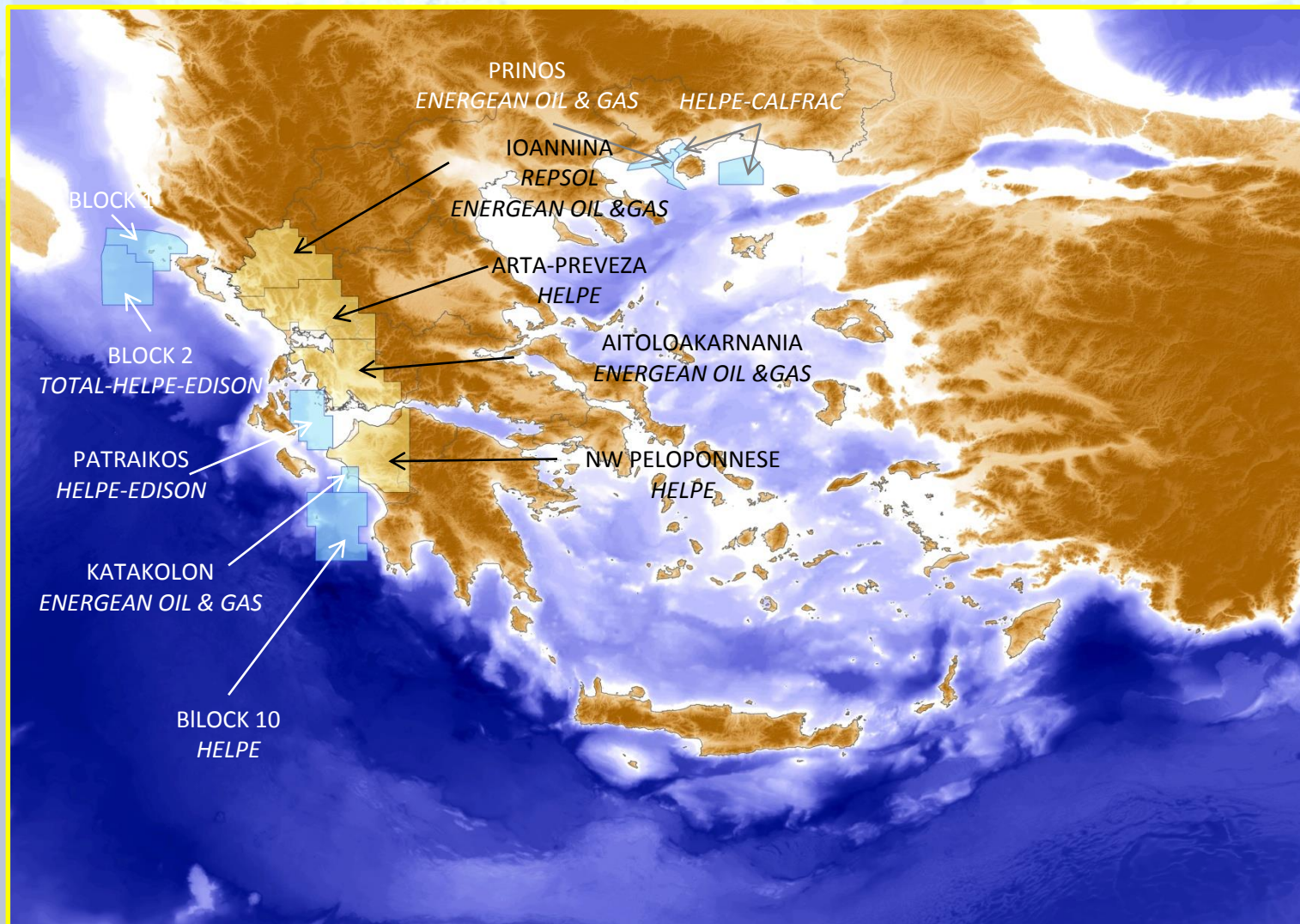
Max width: 9 km, 3 km each rim

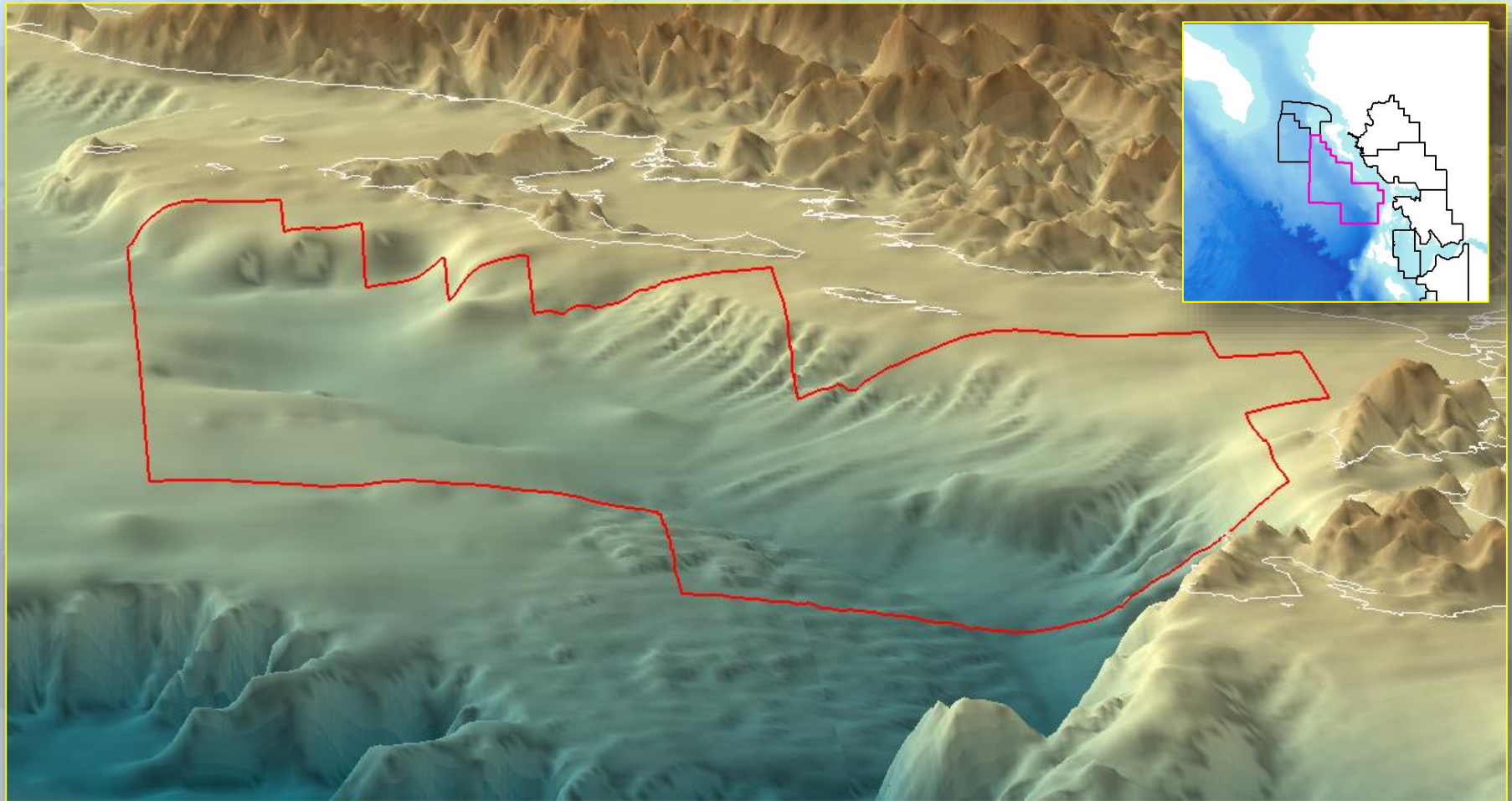
Various channels to be observed

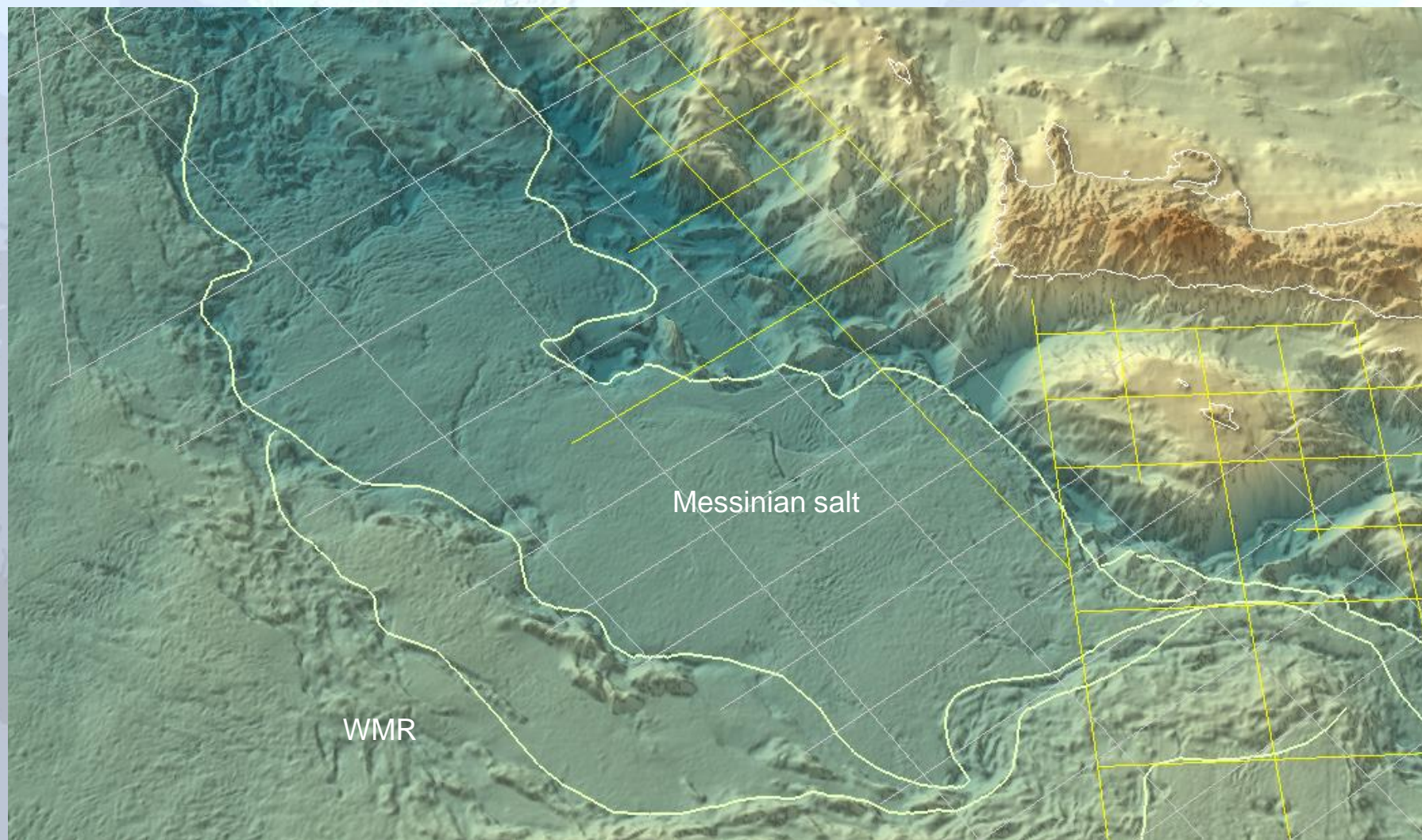


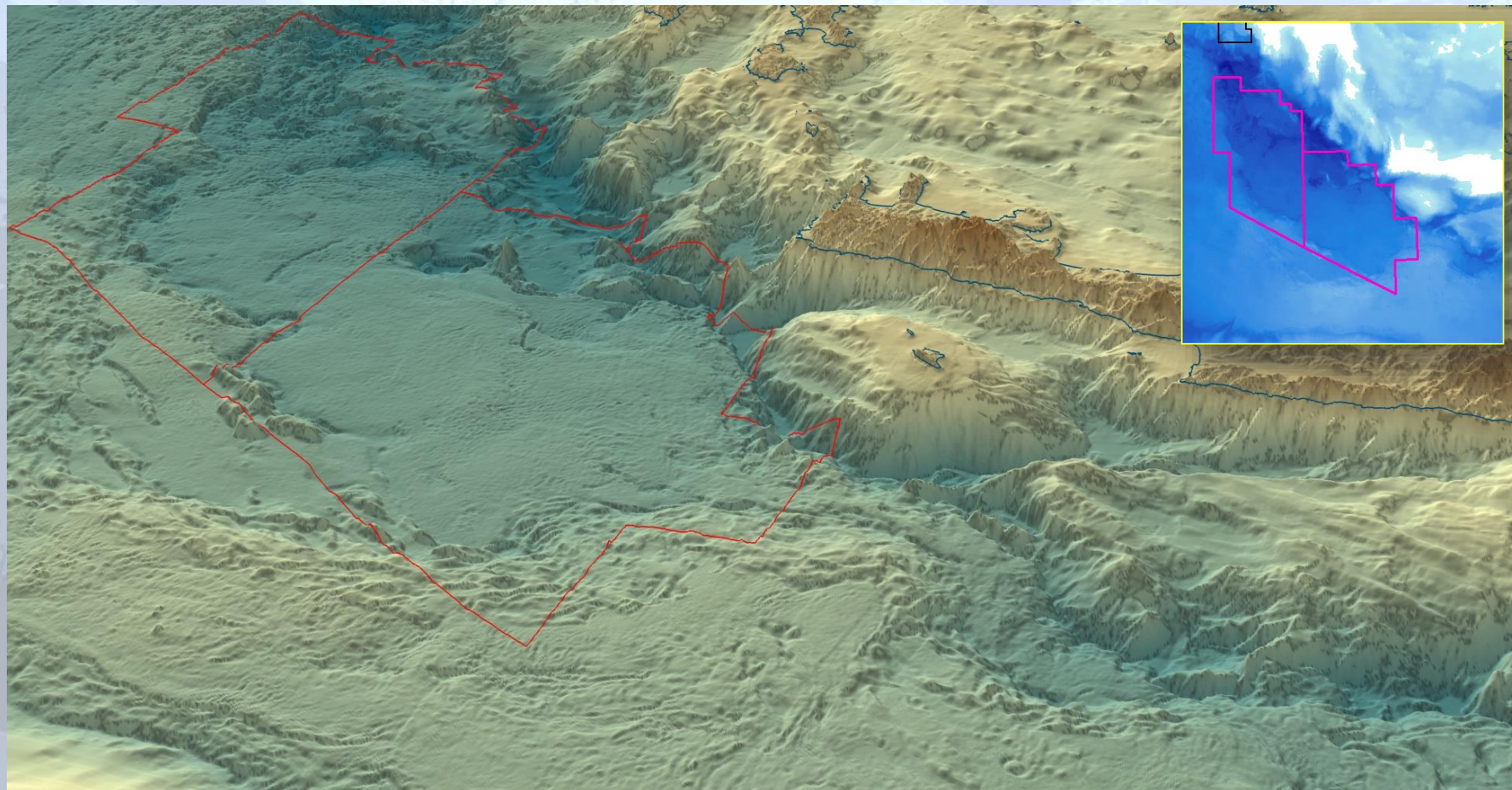




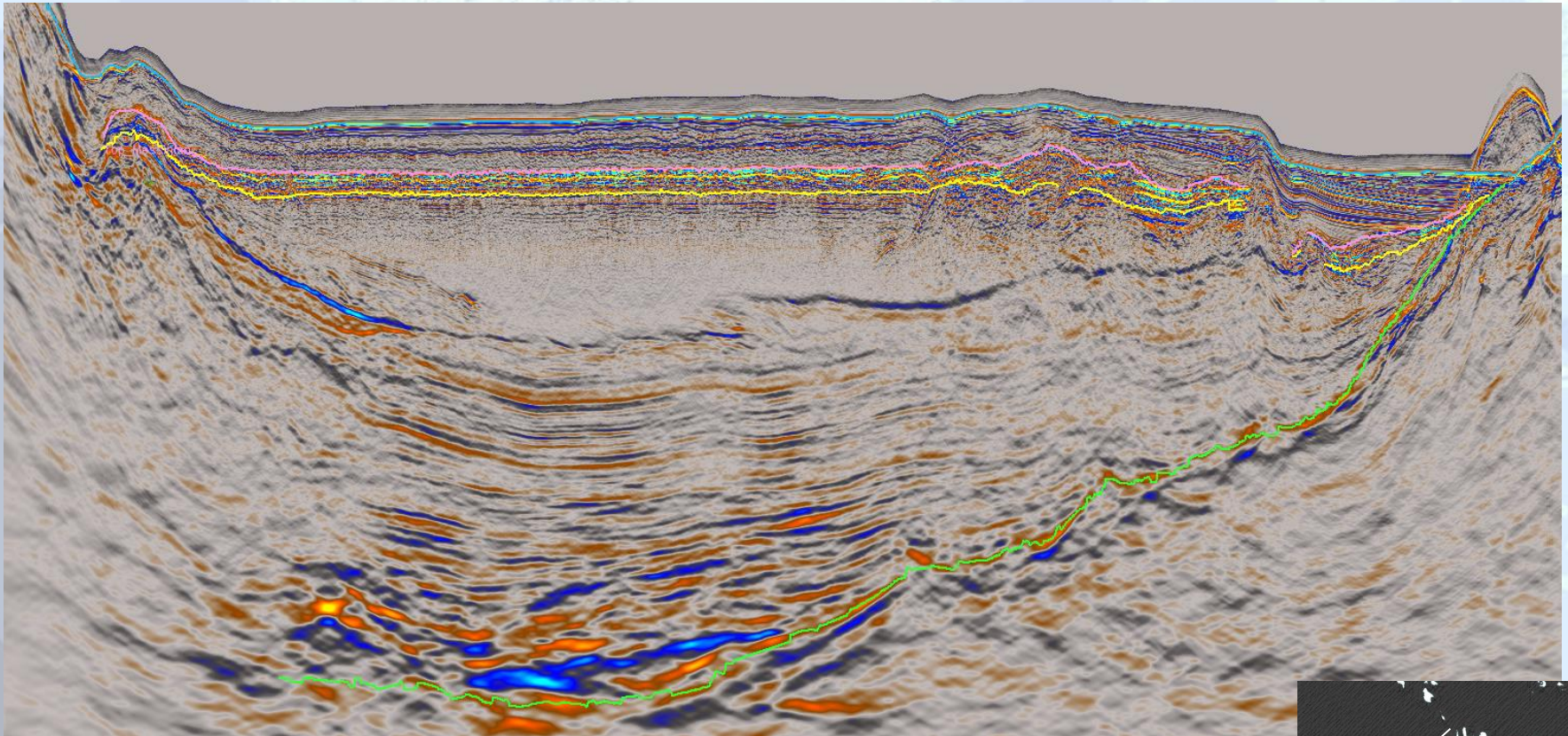








ΕΔΕΥΕ29 28/11/2017



WD at main structure: 2,250 m

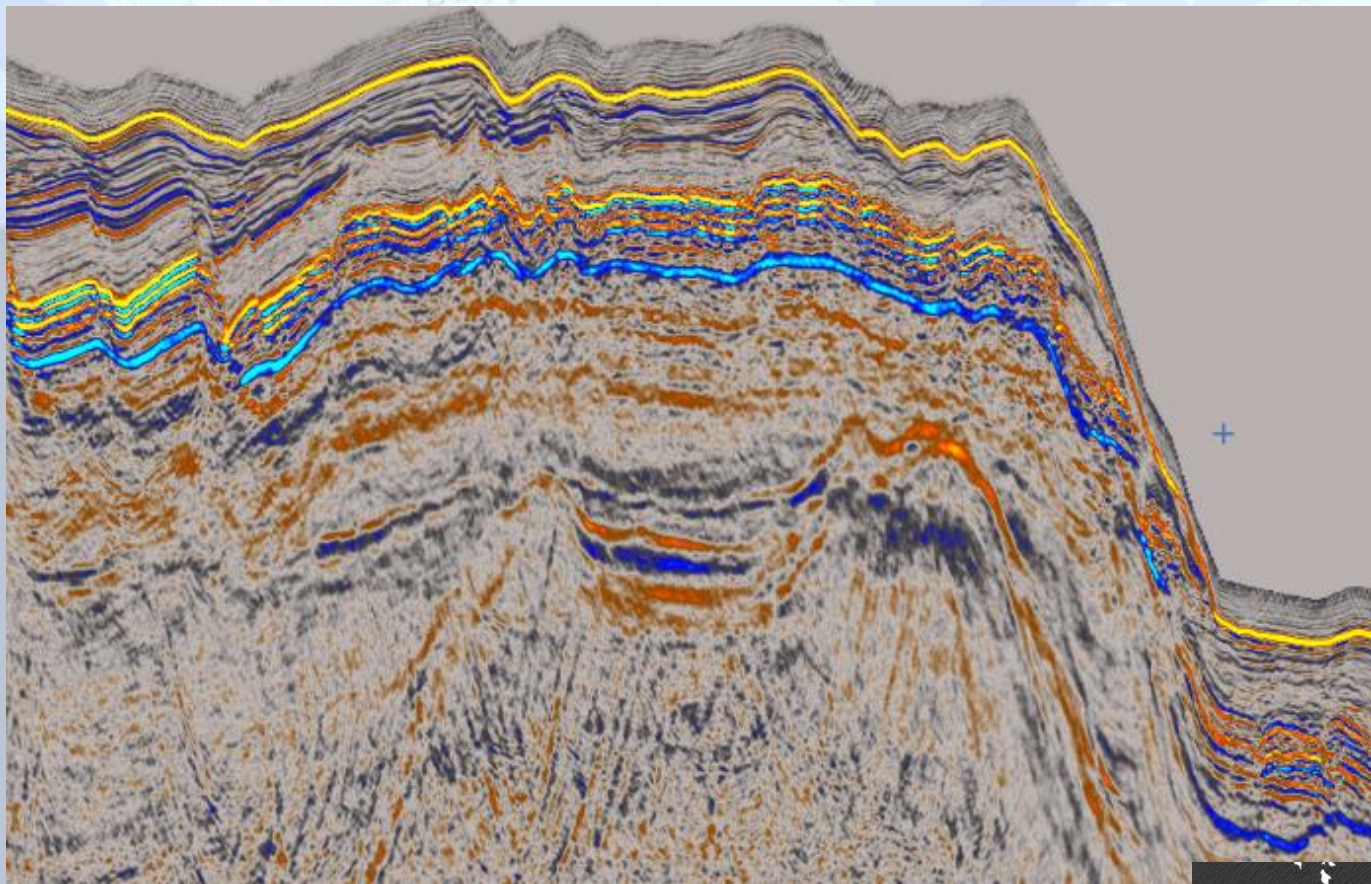
TWT of main structure: 3,0 sec, associated by deeper structure occurrence

Main structure width: 2,4 to 2,7 km, secondary at least double size

TWT Messinian Salt thickness: min. 100 msec (seal)

Cretaceous carbonates erosional surface in green





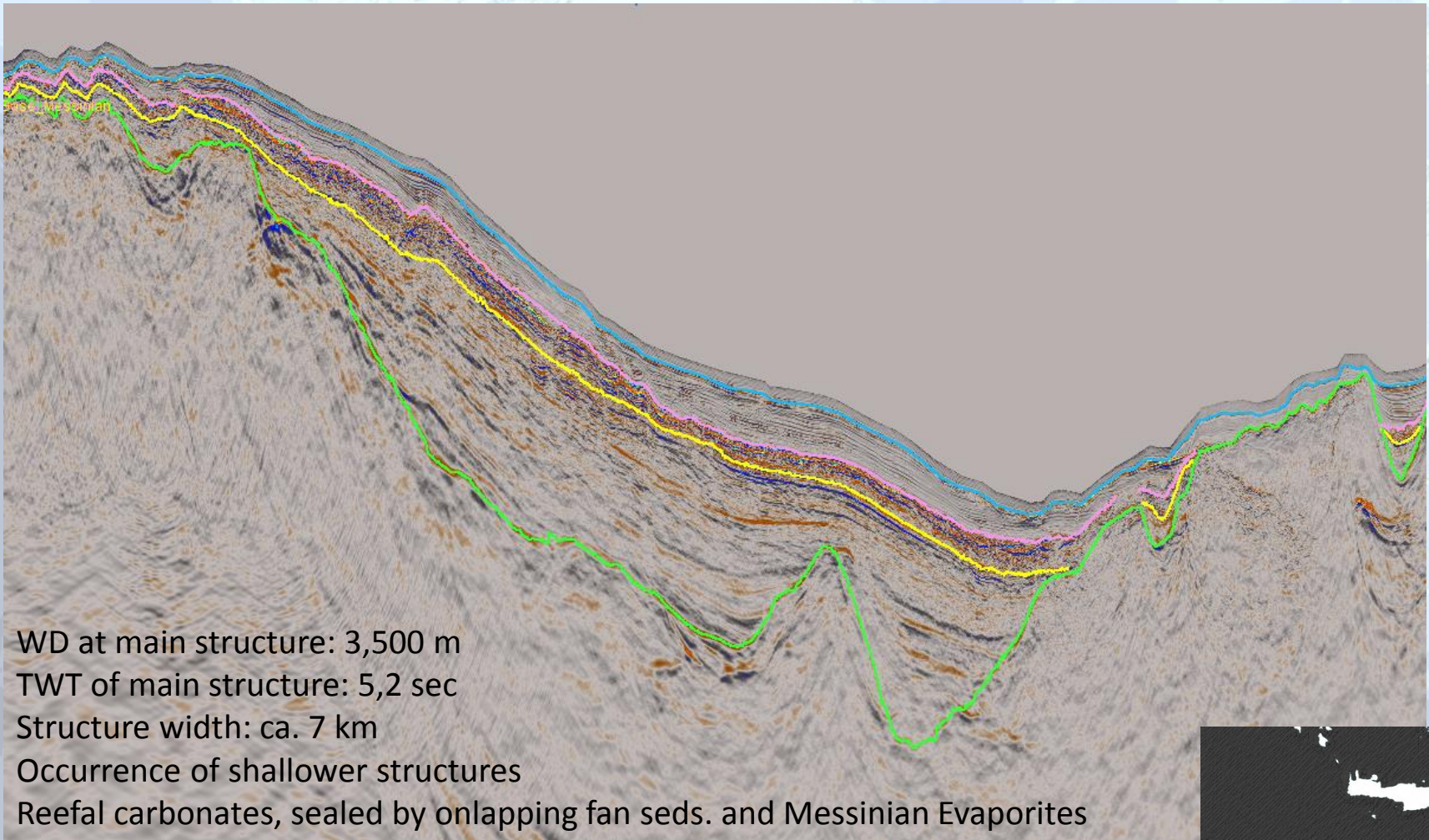
WD at structure: 430 m

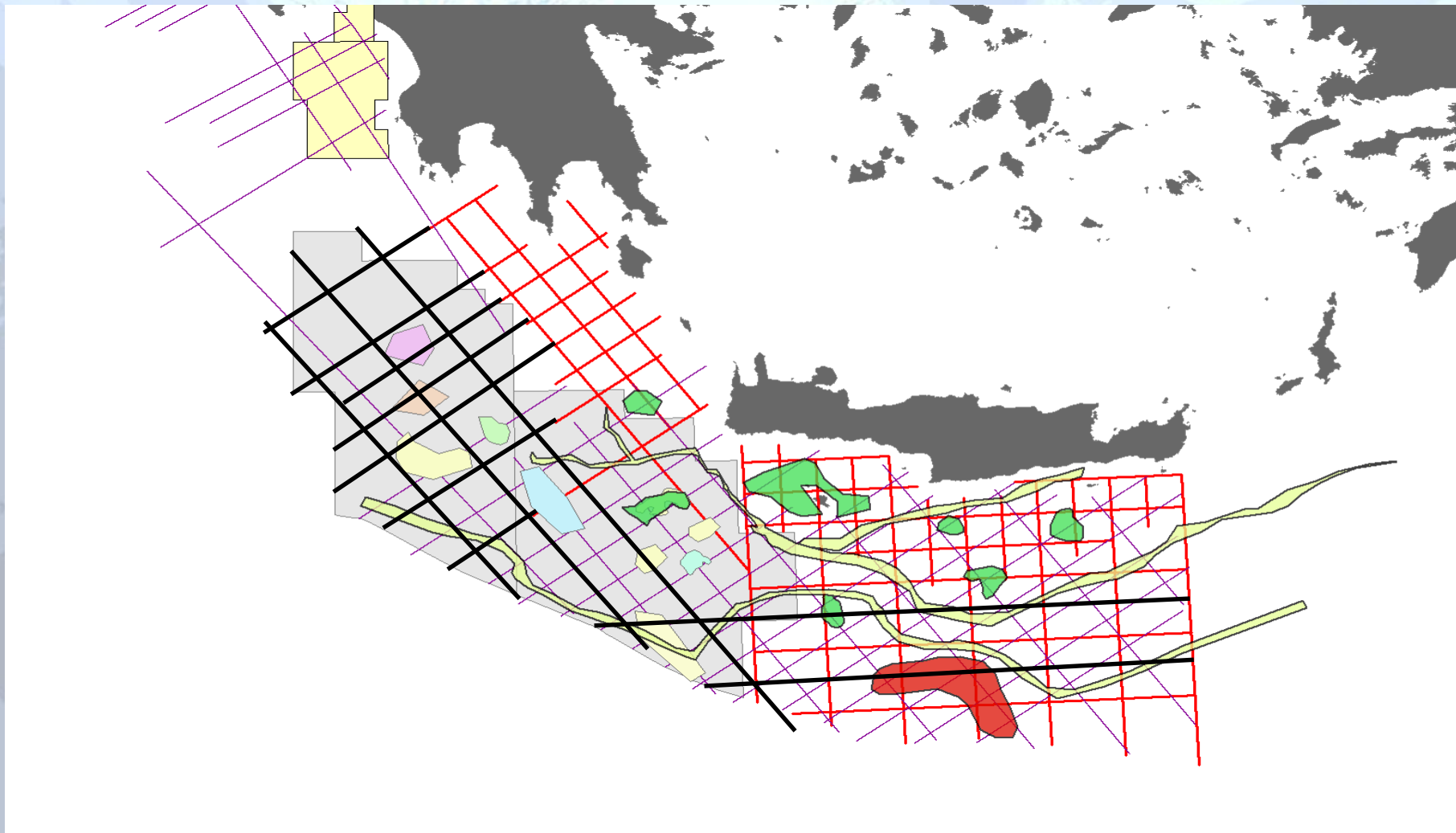
TWT of structure: 950 msec

Structure width: ca. 7 km

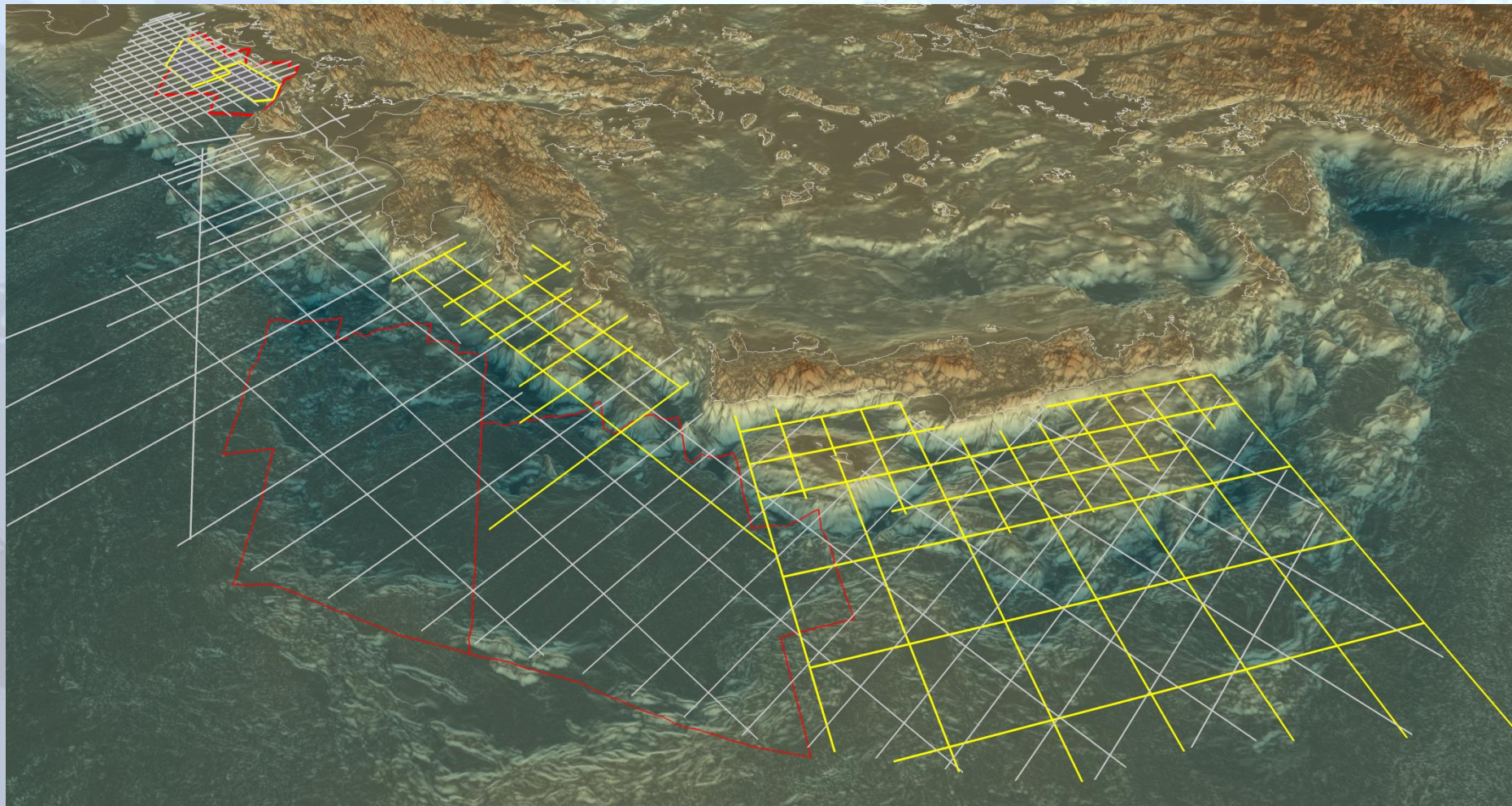
Reefal carbonates “atoll type”, sealed by onlapping lagoonal seds.  
and Messinian Evaporites





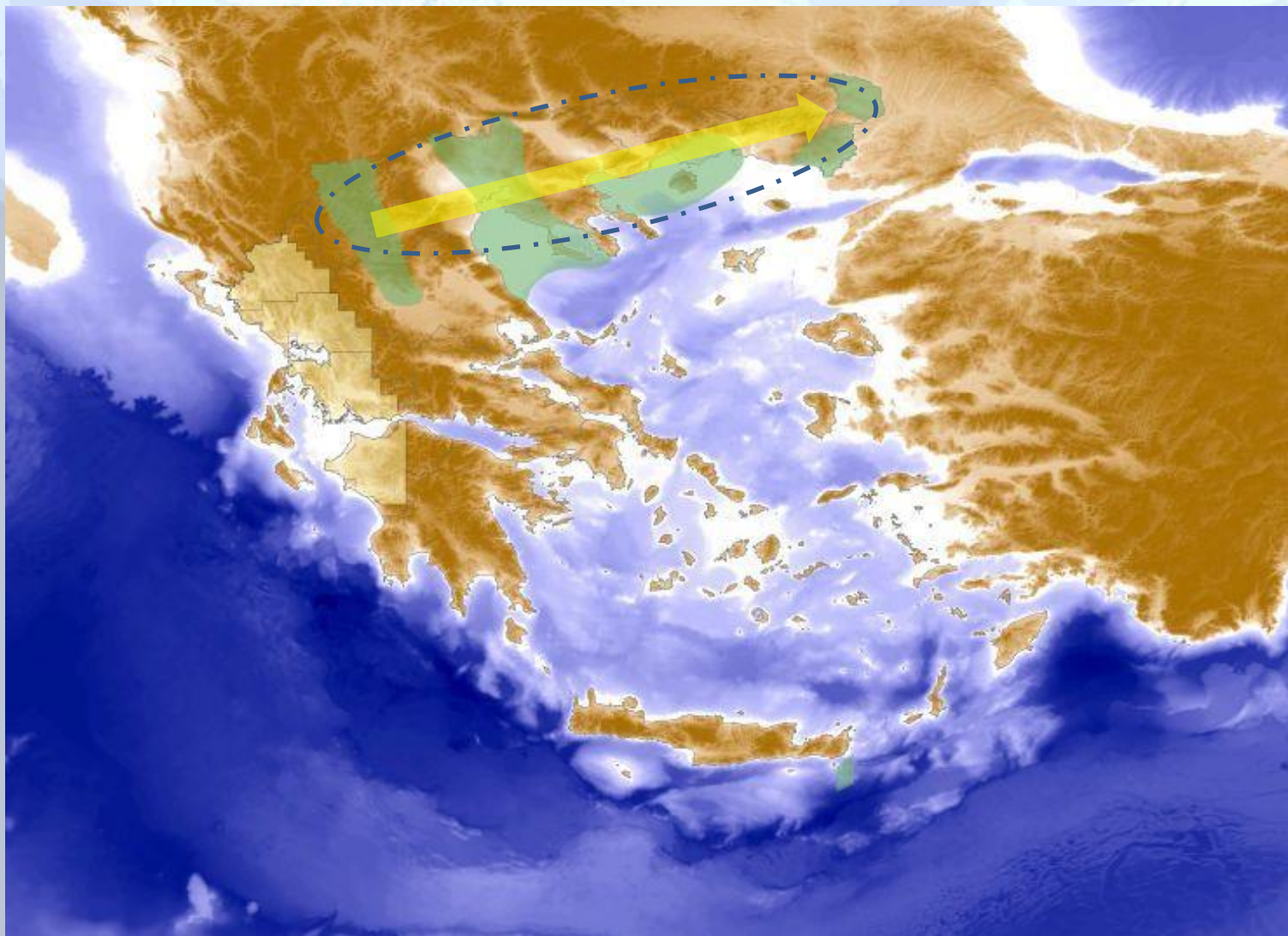






**“A competent independent authority, exercising exclusively the Hellenic Republic’s rights to hydrocarbon resources (i.e. managing upstream activities and licensing)”**

**HHRM is a state company but not a NOC !**



**THANK YOU**

**come to see us or visit**

**[www.greekhydrocarbons.gr](http://www.greekhydrocarbons.gr)**